

# 1H24 Results Announcement

20 September 2023



# Vikesh Ramsunder

## CEO and Managing Director

We acknowledge the Wurundjeri people of the Kulin Nation and acknowledge them as the Traditional Custodians of the land on which we meet today. We pay our respects to their Elders past, present and emerging.



# Agenda

---

1. Review of the Year
2. Financial Performance
3. Business Update
4. Strategy Update
5. Outlook



# Overview - Accelerated improvement in operating performance

---

- IT systems stable and starting to deliver efficiencies
- Significant improvement in operational performance
- New Chemist Warehouse contract commencing 1 July 2024
- Operating costs down 21%
- 10% productivity improvement is being achieved through business simplification
- Completed disposal of Hospital business
- Like for like sales up 7.5%
- FY24 Interim Dividend declared of \$0.005 per share

**\$1.7bn**

Net Sales down 8.4% on 1H23

---

**\$36.7m**

EBITDA up 77.6%

---

**\$22.4m**

EBIT up 315% on 1H23

---

**\$11.2m**

NPAT up from \$1.5m 1H23 loss

---

# **Gary Woodford**

Head of Corporate Affairs  
and Interim CFO



# Financial Performance

## P&L summary (\$'m)

	1H24 \$m	1H23 \$m	% change
Net Sales	<b>1,681.8</b>	1,836.1	(8.4%)
Gross Profit	110.2	131.6	(16.2%)
Other Revenue	53.5	50.4	6.1%
Operating Costs	<b>(127.0)</b>	(161.3)	21.3%
<b>EBITDA</b>	<b>36.7</b>	<b>20.7</b>	<b>77.6%</b>
Depreciation and Amortisation	<b>(14.3)</b>	(15.3)	6.2%
<b>EBIT</b>	<b>22.4</b>	<b>5.4</b>	<b>314.9%</b>
Net Interest	(8.3)	(6.3)	(31.5%)
Tax	(2.4)	0.1	1837.5%
Non-controlling interests	<b>(0.5)</b>	(0.7)	31.8%
<b>NPAT</b> (attributable to owners of the company)	<b>11.2</b>	<b>(1.5)</b>	<b>n/a</b>

## Comments

- Overall sales revenue down 8.4% to \$1.7bn, mainly due to elevated sales of Rapid Antigen Tests (RATs) in pcp and impact of lower sales due to the disposal of the Hospitals business
- **Like for like sales in Wholesale up 7.5% on pcp**
- Gross profit down (\$21.4m) mainly due to elevated RATs margin (\$52m) in pcp not repeated, partly offset by lower stock adjustments (\$25m) and underlying growth in current year wholesale sales
- Other revenue includes \$9.2m gross gain on sale of Hospitals business, partly offset by discontinued revenue from Cura and WholeLife
- **Operating costs favourable by \$34.3m**
- Increased net interest is mainly a consequence of higher interest rates

# Total Operating Costs - down 21.3%

## Warehousing and Logistics costs - \$70.4m, down 12.7%

- People costs down \$10.0m, due to increase in operational efficiencies in the DCs, and prior period includes \$4.4m cost relating to the Cura business
- Warehouse productivity in the first half improved by 10%

## Sales and Marketing costs - \$18.6m, down 30.8%

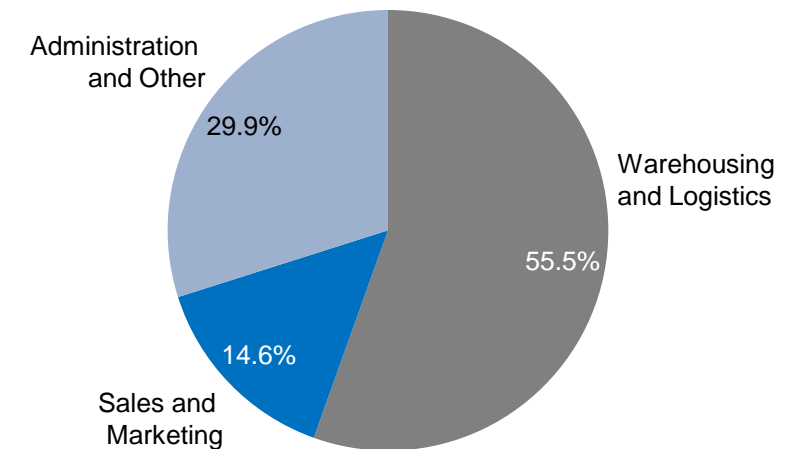
- People costs down \$3.0m, due to the team restructure in the second half of the prior year
- Impairment on trade debtors were lower by \$2.9m in the current period

## Administration/Other costs - \$38.0m, down 7.3%

- \$4.1m favourable SaaS expense v pcp

**Remain focused on delivering operational improvement and efficiencies**

Operating expenses by category



# Balance Sheet

## Statutory Balance Sheet extract (\$'m)

	1H24 \$m	FY23 \$m	Change %
Cash and cash equivalents	11.3	16.7	(32.3%)
Trade and other receivables	335.9	333.8	0.6%
Inventories	256.5	324.9	(21.1%)
PPE	191.9	200.2	(4.1%)
Goodwill & other Intangible assets	101.2	118.2	(14.4%)
Right-of-use assets	88.0	90.7	(3.0%)
Other assets	108.1	89.6	20.6%
<b>Total assets</b>	<b>1,092.9</b>	<b>1,174.1</b>	<b>(6.9%)</b>
Bank overdraft	13.6	3.7	267.6%
Trade and other payables	354.4	449.7	(21.2%)
Borrowings	80.0	80.0	0.0%
Lease liability	141.0	143.3	(1.6%)
Other liabilities	18.5	19.6	(5.6%)
<b>Total liabilities</b>	<b>607.5</b>	<b>696.3</b>	<b>(12.7%)</b>
<b>Net assets</b>	<b>485.4</b>	<b>477.8</b>	<b>1.6%</b>
Net Debt / EBITDA <sup>1</sup>	1.3x	1.4x	

<sup>1</sup> Net Debt / EBITDA is based on LTM EBITDA

## Comment

- Reduction in inventory in 1H24 mainly relates to CHS Hospitals business disposal, and stock holding reduction due to improved inventory management
- Decrease in trade payables mainly reflects lower purchases ahead of the disposal of CHS Hospitals business, in line with inventory reduction
- Net Debt / EBITDA leverage reduction to 1.3 x primarily due to improved earnings growth, productivity gains and disciplined cost management
- Strong liquidity maintained with \$156.4m of undrawn bank facilities at 31 July 2023

# Cash Flow

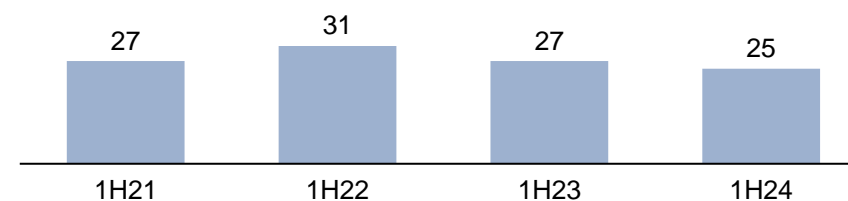
## Statutory Cash Flow statement extract (\$'m)

	1H24	1H23	Change	Change
	\$m	\$m	\$	%
Receipts from customers	1,924.5	2,083.7	(159.2)	(7.6%)
Payments to suppliers and employees	(1,918.3)	(1,976.2)	57.9	(2.9%)
Net Interest	(5.9)	(3.0)	(2.9)	96.7%
Income taxes (paid)	(2.0)	(6.5)	4.5	(69.2%)
<b>Operating cash flow</b>	<b>(1.7)</b>	<b>98.0</b>	<b>(99.7)</b>	<b>(101.7%)</b>
<b>Investing cash flow</b>	<b>(0.6)</b>	<b>(15.1)</b>	<b>14.5</b>	<b>(96.0%)</b>
<b>Financing cash flow</b>	<b>(12.9)</b>	<b>(89.3)</b>	<b>76.4</b>	<b>(85.6%)</b>
Net increase / (decrease) in cash	(15.2)	(6.4)	(8.8)	137.5%
Cash at the beginning of the period	13.0	15.8	(2.8)	(17.7%)
Net Cash and cash equivalents at the end of the period	(2.2)	9.3	(11.5)	(123.7%)

## Comment

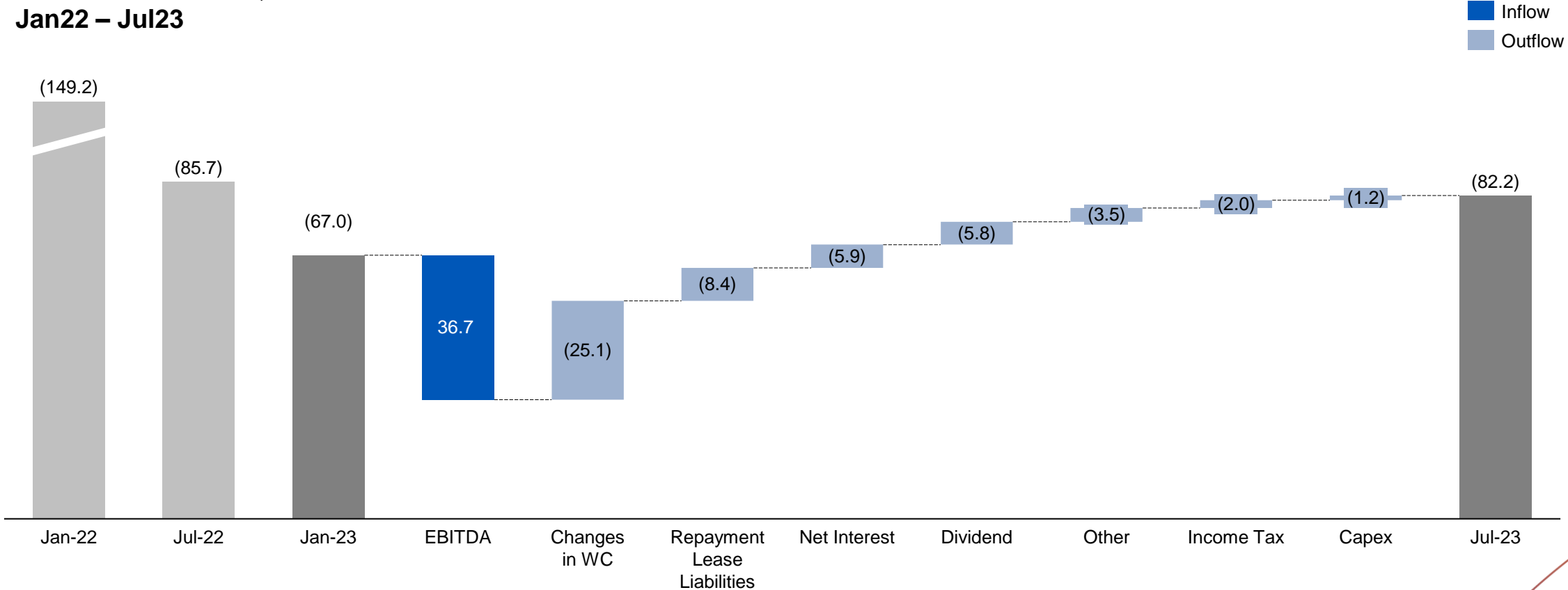
- Operating cash flow - 1H23 reflects strong cash inflow from RAT sales at the peak of the Omicron variant, and timing of supplier payments related to SAP implementation issues
- Investing cash flow - reduction reflects completion of Truganina Distribution Centre extension
- Financing cash flow - reduction relates to debt repayment of \$70m Tranche C facility in 1H23
- Cash Conversion Cycle days decreased by 1.4 days from 1H23 to 1H24 as a result of improved working capital management

## Cash Conversion Cycle



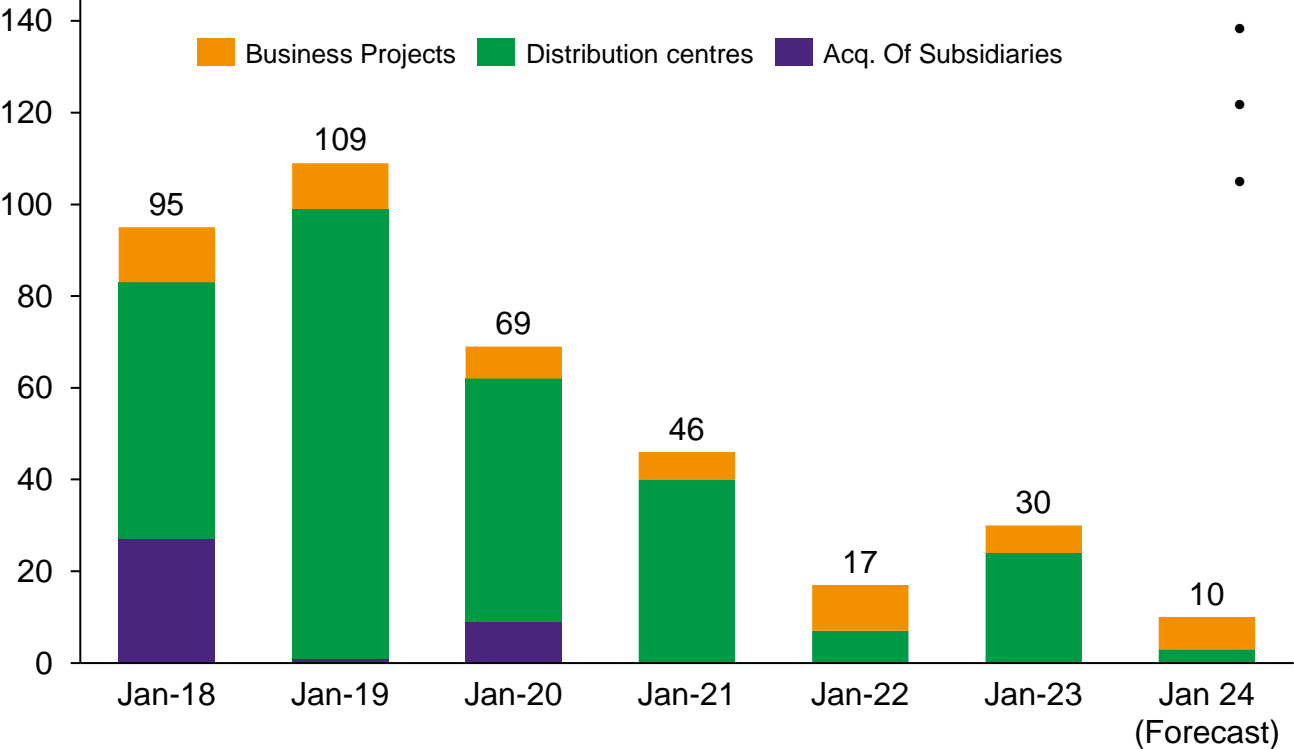
# Net Debt significantly reduced over the last 18 months

Net Debt movement, \$m  
Jan22 – Jul23



# Capital Expenditure

## Capital Expenditure \$'m



Excludes SaaS expenditure which is fully expensed in the year incurred

## Capex

- Now largely ex-Capex
- Minimal capex spend in the first half
- Go forward maintenance capex levels c. \$5m - \$10m pa

# Vikesh Ramsunder

## Business Update



# Information Technology – a key business improvement enabler

- **Continuous improvement** of our IT systems has taken place over 1H24
- ERP has been **100% stable** and is standardising many of our processes, helping implement the ISO 9001 quality standards accreditation, which we expect to achieve in October 2023
- System uptime is now better than pre-ERP implementation, running above **99.9%**
- Implemented an **enhanced Supply Planning** solution seamlessly helping to reduce our inventory levels
- We **upgraded our B2B commerce solution** (Sigma Connect) providing a better retail experience for our wholesale customers
- Preparing to launch our **hyper local omni-channel delivery** service via Amcal and DDS stores this month
- Technology team are now focused on **delivering cost reductions** and further streamlining our technology platforms



# Core business streams

Wholesale operations



Retail



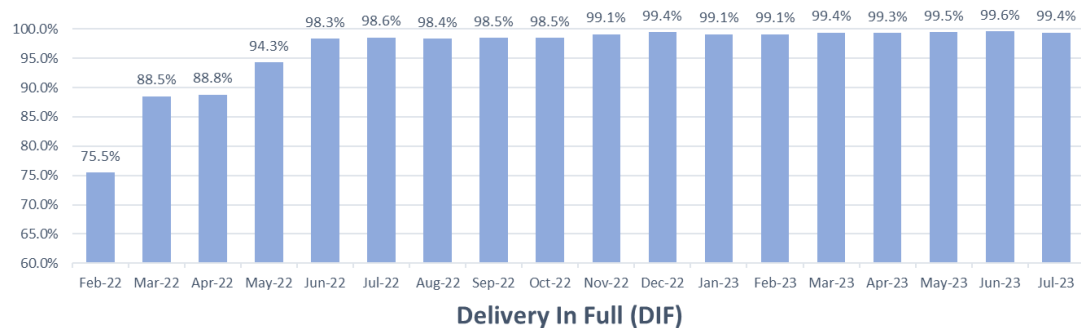
Third Party Logistics (3PL)



We are currently building capabilities to pursue our growth ambitions.

# Wholesale operational performance

- 113m units delivered in 1H24
- **Over 99% Delivery in Full (DIF) every month**
- Improved inventory management
- **12.7% reduction in logistics costs** versus 1H23
- 1.7m fewer kilometres travelled on an annualised basis through **route optimisation**
- **10% productivity improvement** achieved versus 1H23
- Maintained strong safety focus



- Focused on supporting and growing brand membership of Amcal and Discount Drug Stores (DDS)
- **DDS awarded 2nd overall for customer satisfaction** among Australian pharmacies by Canstar Blue
- Implementing foundational best in class retail management practices:
  - ❑ **Embedding category management** retail structure
  - ❑ Optimising space management through **improved planograms**
  - ❑ **Simplifying pricing** structures
  - ❑ Improving and expanding **private and exclusive label range**



# Private and Exclusive Label

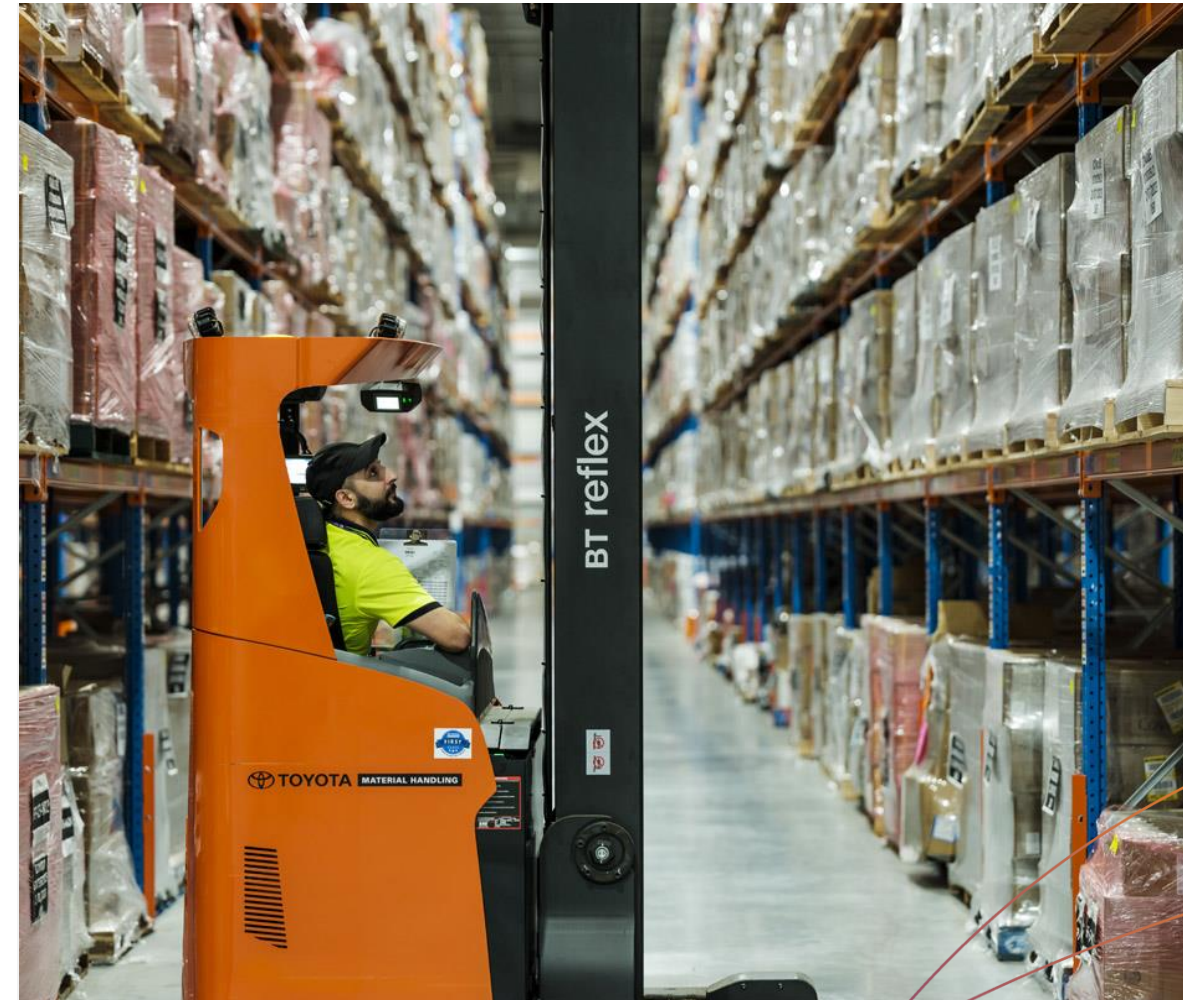


- We have built a team of product specialists
- Significantly **increased the pipeline of new product**
- Packaging and design work underway
- Supplier partnerships strengthened
- Expect to **launch over 250 products in FY25**, with development across major categories:
  - ❑ Medicines
  - ❑ Health and wellbeing
  - ❑ Beauty, fragrances and gifting



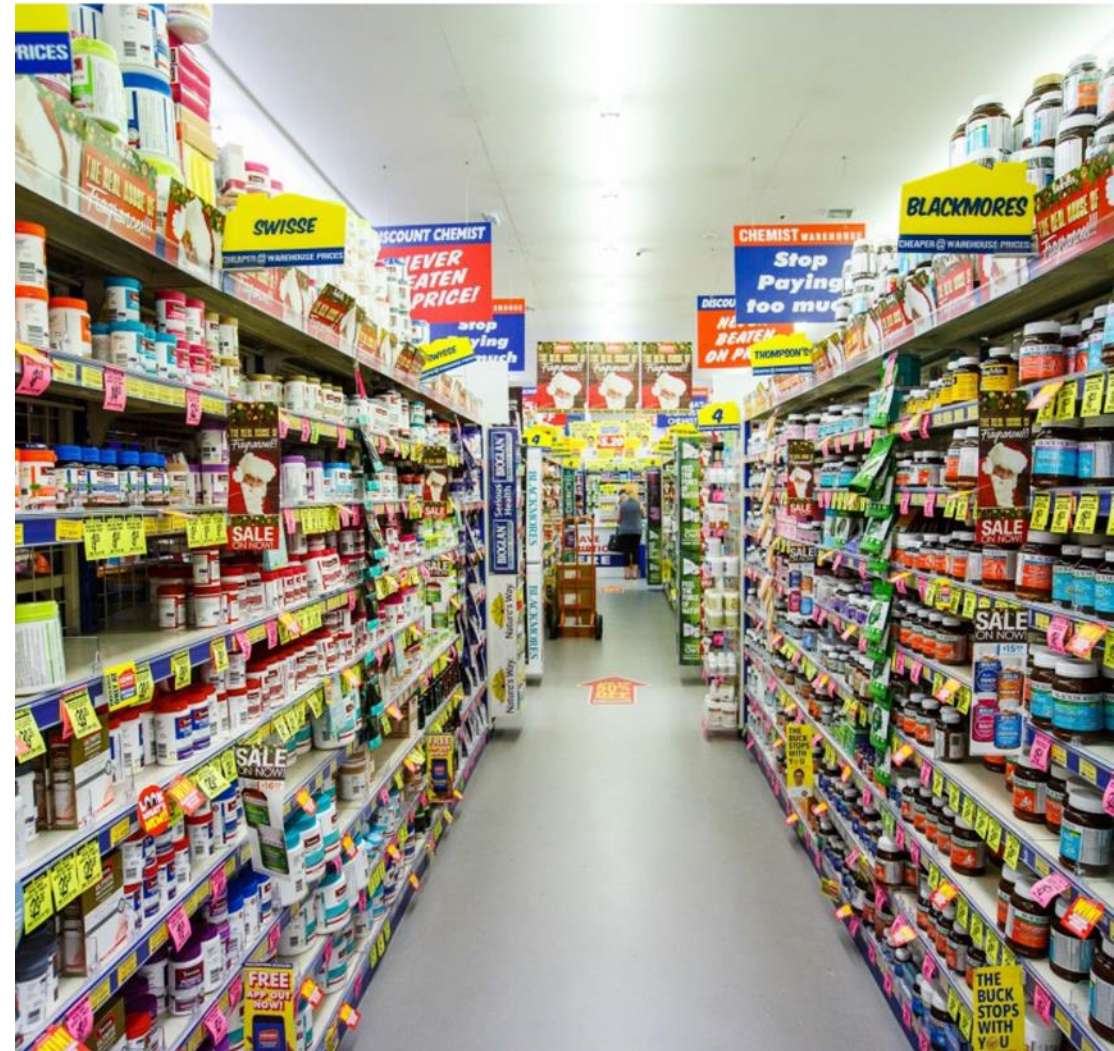
# Third Party Logistics (3PL)

- Increase in number of 3PL customers serviced
- 3PL profit contribution **growth of 27%** driven by capacity utilisation
- **More than 33,000 pallets** under management
- 60m units shipped in 1H24
- **Utilising increased capacity** to support 3PL customers in six states

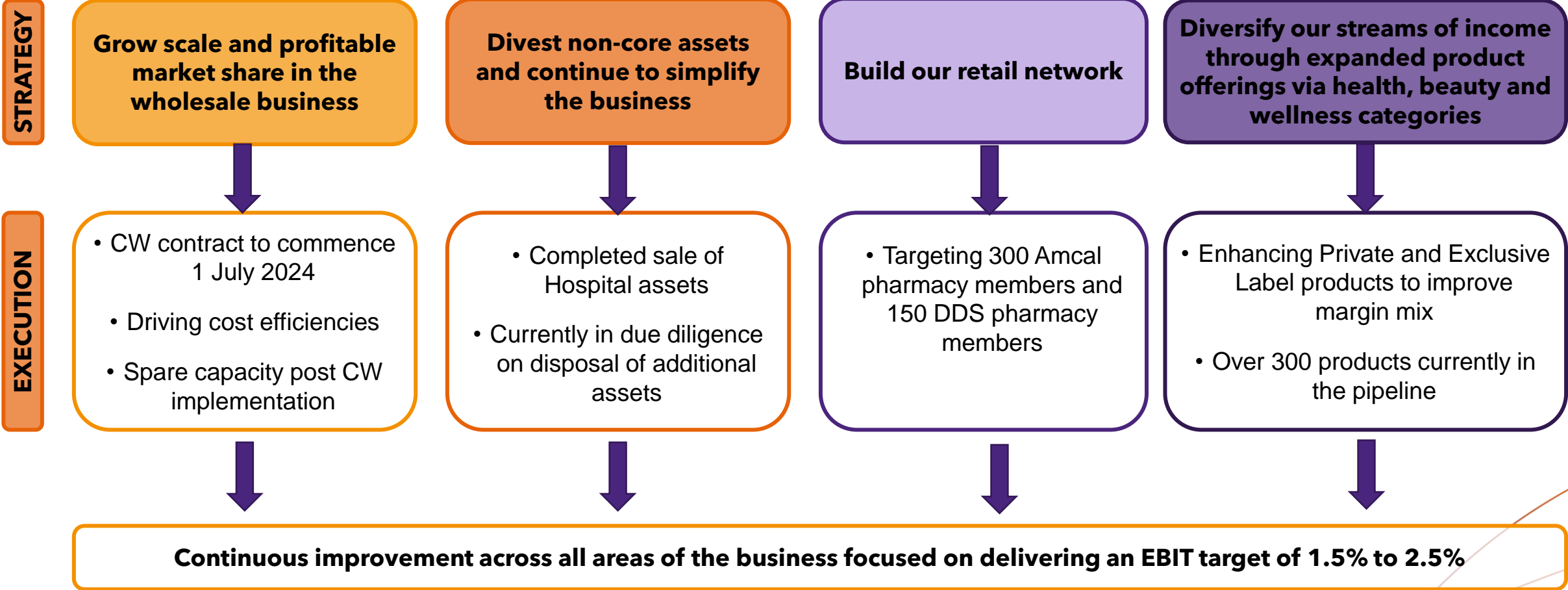


# Chemist Warehouse supply agreement

- Announced in June and long form agreements signed and announced to ASX on 31 August 2023
- Supply contract **commences 1 July 2024** – for supply of PBS medicines and FMCG
- **\$3 billion revenue in the first full year of the contract**
- Secures significant annual minimum volume growth and leverages Sigma's existing DC infrastructure with minimal additional capex requirement
- Chemist Warehouse will acquire 127m ordinary shares in Sigma from 1 July
- Focused on operational execution and assessing financing requirements



# Strategy execution on track



# FY24 Outlook

---

1. Confident our strong operational performance will continue
2. Focused on delivering value to our Amcal and DDS brand members through improved retail and product offers
3. 60-day dispensing implemented 1 September 2023, and we are engaged with Government through the National Pharmaceutical Services Association (NPSA)
4. Preparing for the implementation of the Chemist Warehouse contract
5. Maintaining EBIT guidance of between \$26m to \$31m for FY24 inclusive of one-off costs anticipated in 2H24

# Thank you



## Appendix 1 – Reconciliation of Reported to Like for Like

(\$'m)	1H24 \$m	1H23 \$m
<b>Reported EBIT</b>	<b>22.4</b>	<b>5.4</b>
<i>Add back:</i>		
Contribution loss from discontinued business (Cura/Wholelife and Hospital)	0.8	10.7
Stock adjustments	1.5	22.8
Rowville and Mulgrave assets write-off	-	4.9
<i>Less:</i>		
Gain on sale of Hospital Assets	(8.7)	-
Gross profit on RATs	(0.1)	(52.3)
<b>Like for Like EBIT</b>	<b>15.9</b>	<b>(8.5)</b>
<b>Reported NPAT</b>	<b>11.2</b>	<b>(1.5)</b>
<i>Add back:</i>		
Contribution loss from discontinued business (Cura/Wholelife and Hospital)	0.6	9.7
Stock adjustments	1.0	15.9
Rowville and Mulgrave assets write-off	-	3.4
<i>Less:</i>		
Gain on sale of Hospital assets	(8.8)	-
Gross profit on RATs	(0.1)	(36.6)
<b>Like for Like NPAT</b>	<b>3.9</b>	<b>(9.1)</b>

# Important Notice

---

The information contained in this presentation about Sigma Healthcare Limited and its subsidiaries (Sigma) is designed to provide an overview of the financial and operational highlights for Sigma for the half year period ending 31 July 2023; and a high level overview of aspects of the operations of Sigma, including comments about Sigma's expectations of the outlook for FY2024 and future years, as at 20 September 2023.

This presentation contains forward-looking statements relating to operations of Sigma that are based on management's own current expectations, estimates and projections about matters relevant to Sigma's future financial performance.

Any forward-looking statements, assumptions, projections, estimates, and outcomes contained in this presentation should not be relied upon as a representation or warranty, express or implied by Sigma. They are not an assurance or guarantee of future performance nor should be taken to be, and involve known and unknown risks, uncertainties and other factors which are beyond the control of Sigma in relation to the future business performance or results of Sigma or the likelihood that the assumptions, estimates or outcomes will be achieved.

While Sigma, its officers and management have made every effort to ensure the accuracy of the information in this presentation, this presentation is provided for information only. Neither Sigma, its directors, officers, agents, employees or advisors make any representation, or give any warranty, express or implied, as to the fairness, accuracy, completeness or correctness of the information, forward-looking statements, opinions, estimates, projections, outcomes and conclusions contained in this presentation. Accordingly, to the maximum extent permitted by law, Sigma, its directors, officers, agents, employees and advisors exclude and disclaim any liability, whether direct or indirect, in respect of the accuracy or completeness of the information or any other opinions contained in this presentation or errors, omissions, statements or for any loss, howsoever arising, from anything done in reliance or the use of this presentation.

Sigma assumes no obligation to update or revise any forward-looking statements. Nothing in this presentation constitutes investment advice and this presentation shall not constitute an offer, invitation, solicitation or other recommendation to sell or buy any securities or otherwise engage in any investment activity in Sigma Healthcare Limited. Investors should make their own enquiries and seek their own professional advice (including financial and legal advice) before dealing in securities of Sigma Healthcare Limited.